



**THE BROOKS SERVING IN THAILAND SINCE 1998**  
**WILL , MENG- EN AND HADASSAH (3 T'S)**



**SERVING WITH A  
HOPE FOR EAST  
ASIA FOR OVER 150  
YEARS OMF/ CIM**





FOR THE EARTH WILL BE FILLED WITH  
THE KNOWLEDGE OF THE GLORY OF  
THE LORD AS THE WATERS COVER  
THE SEA.

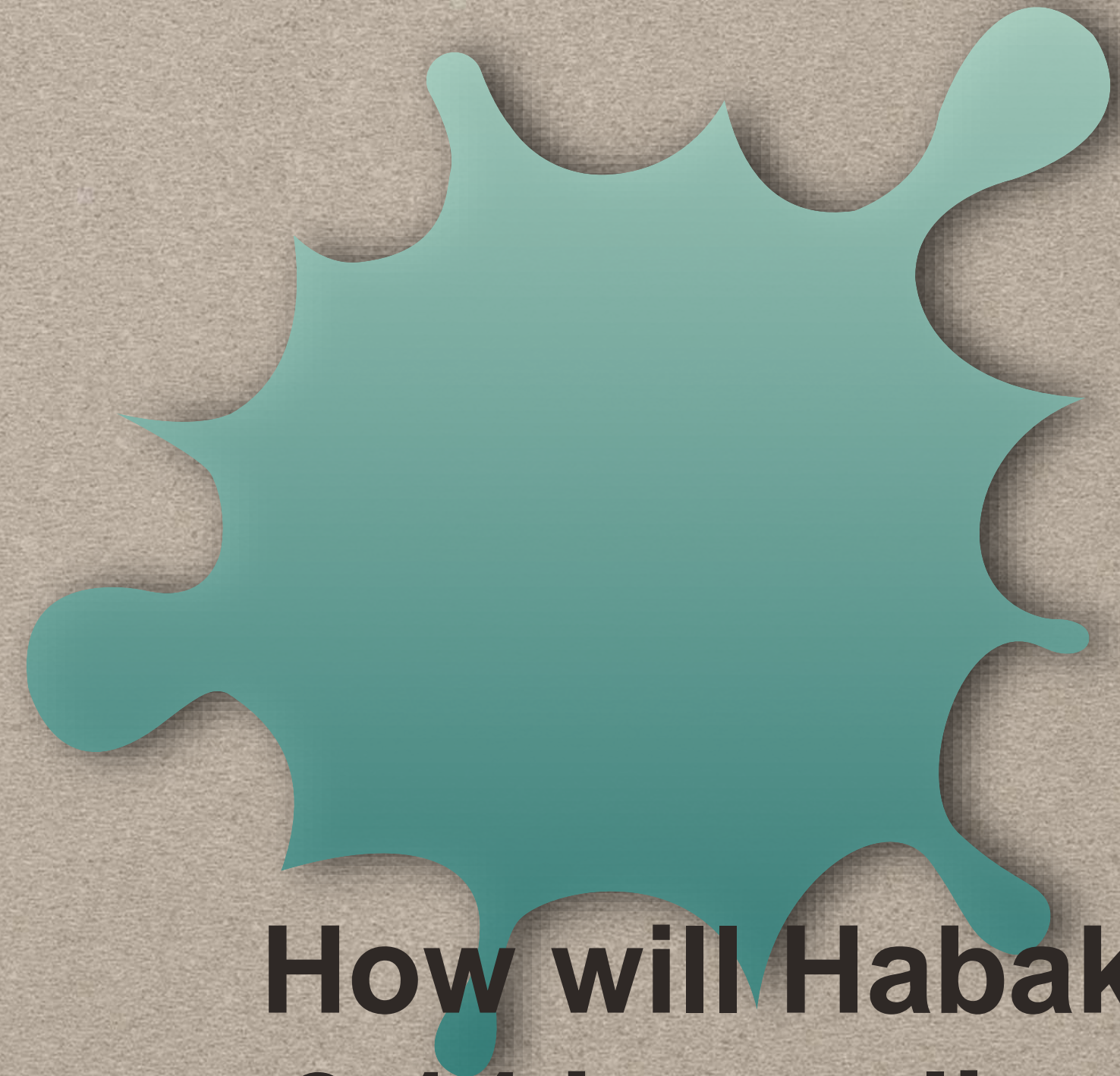
**Habakkuk 2:14**



**GENESIS 1:27-28**

**GENESIS 9:1-4**

**GENESIS 12:1-3**

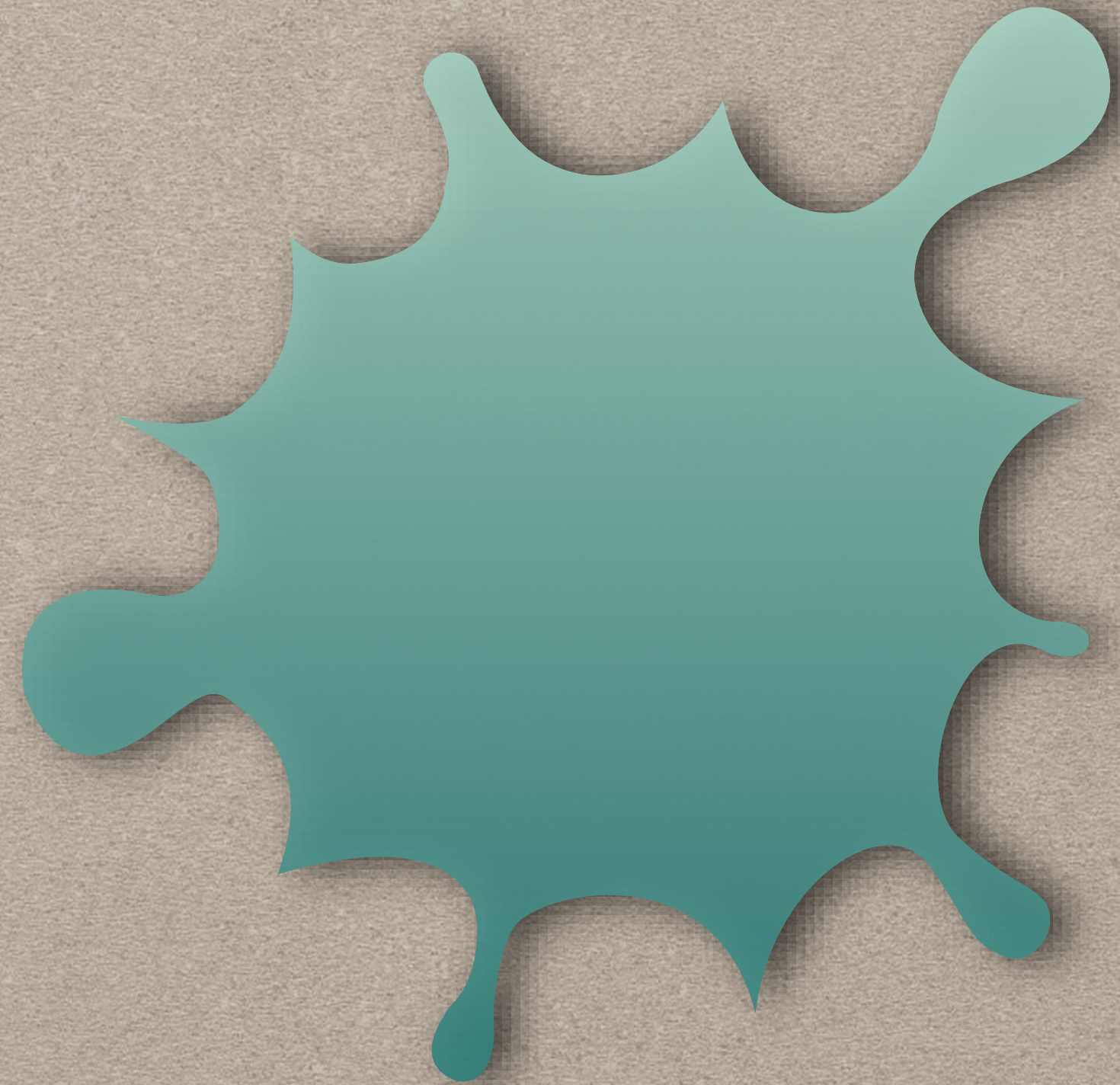


**How will Habakkuk  
2:14 be realized in  
these passages?**



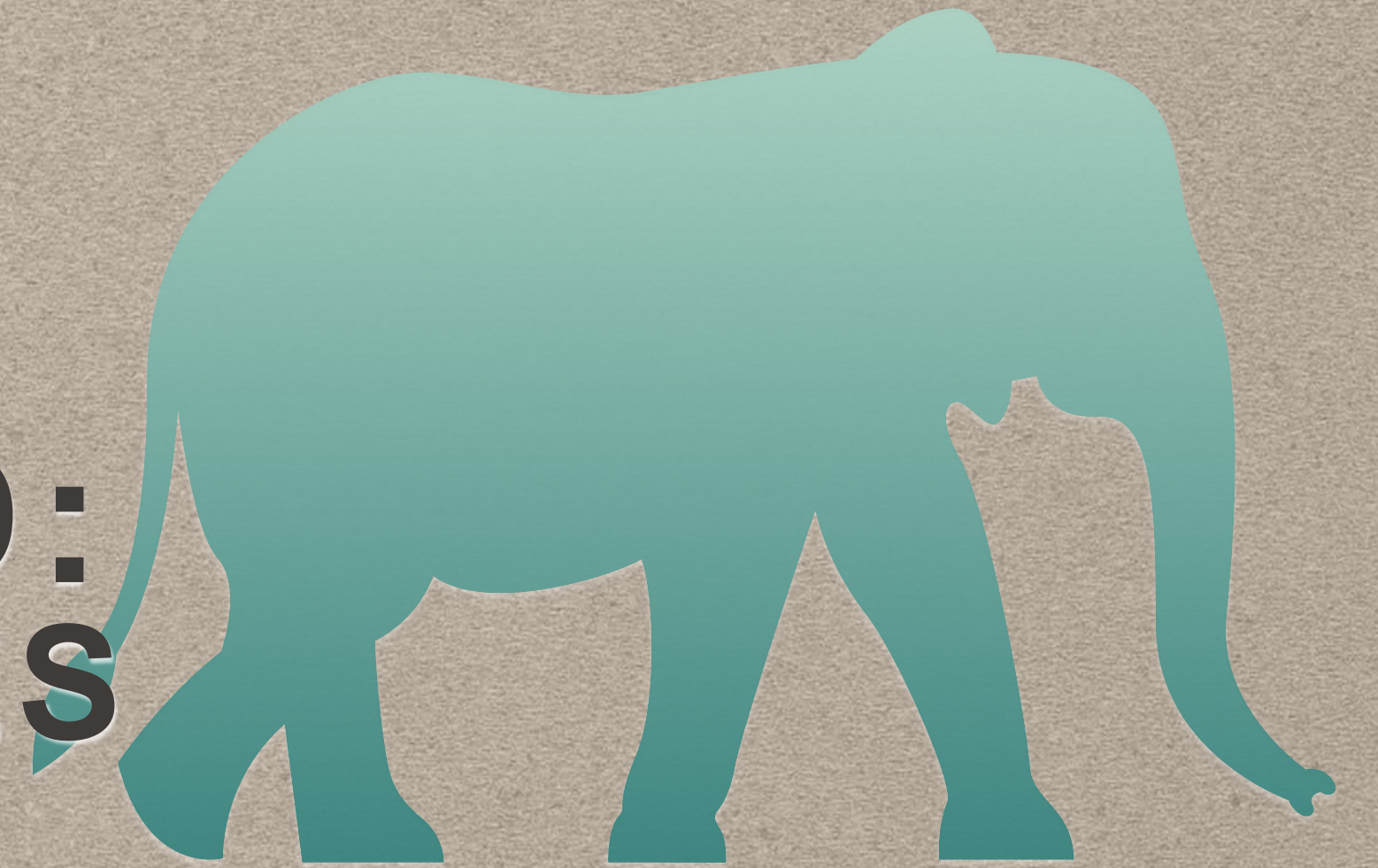
**GAL 3:6-9**

**GAL 3:16-18**





**WELCOME TO THAILAND:  
WELCOME NEW MISSIONARIES**

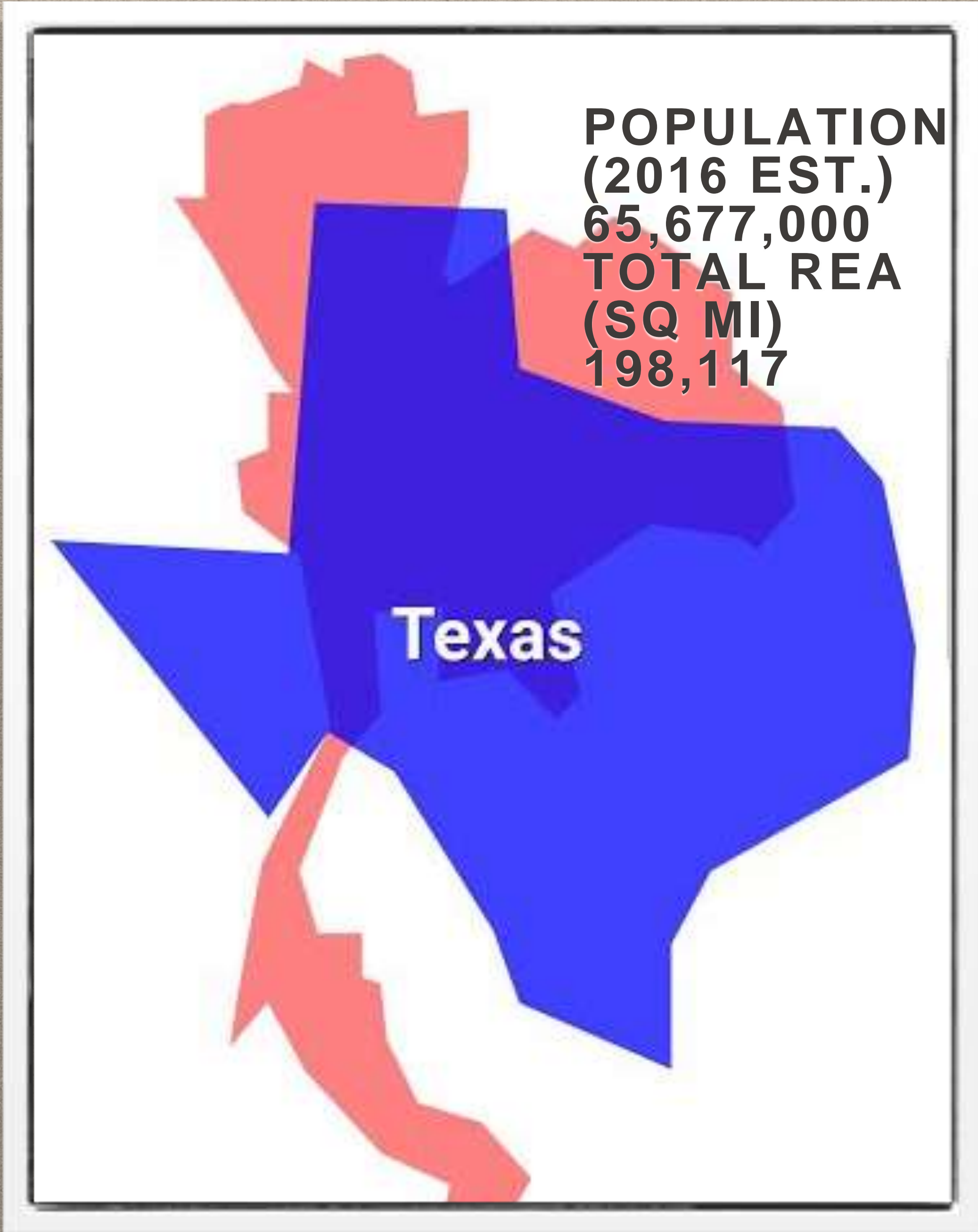




LAND OF  
**SMILES**  
LAND OF NEEDS

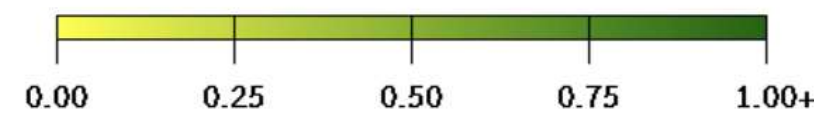
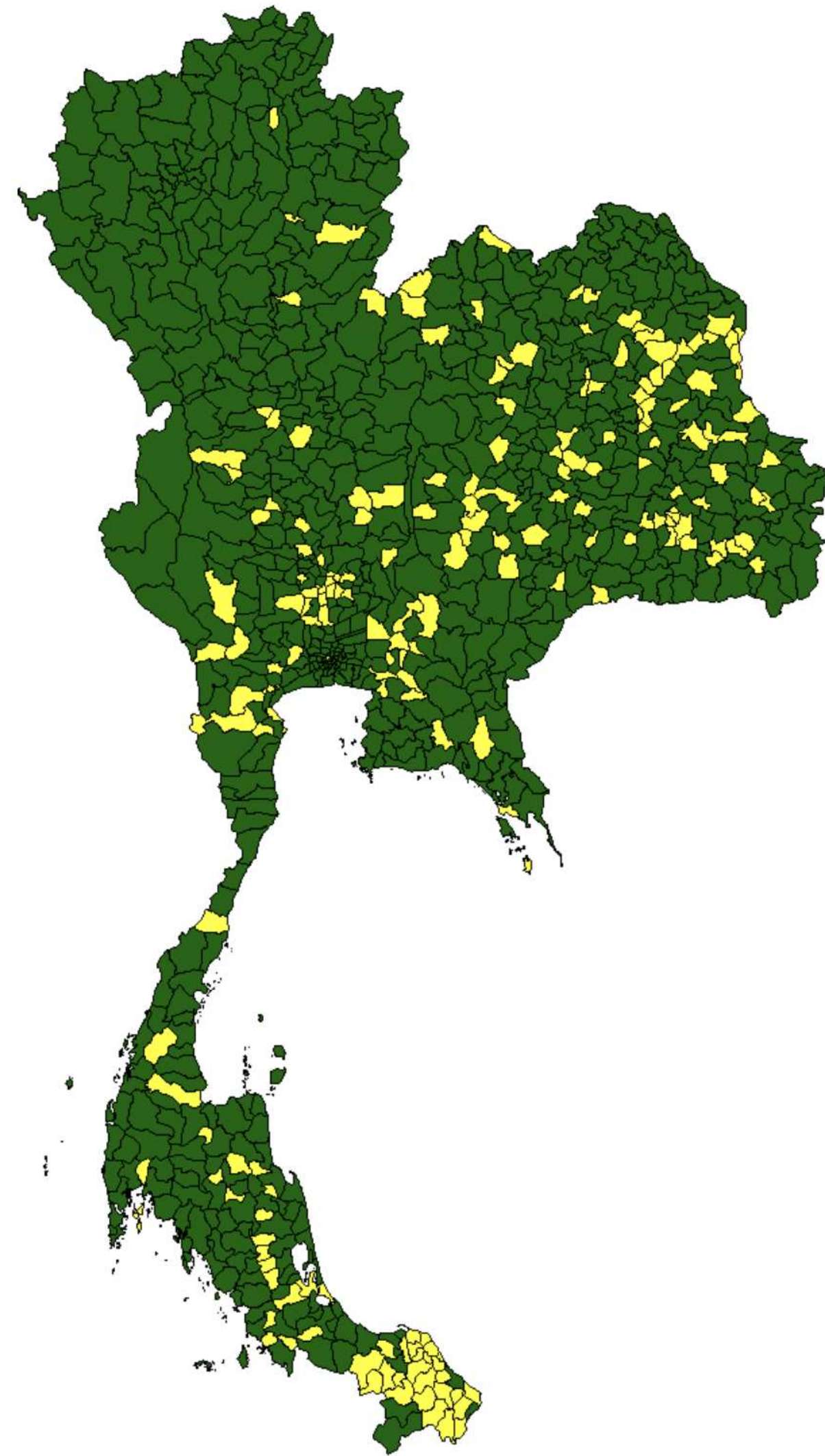






Caption





# THAILAND HAS

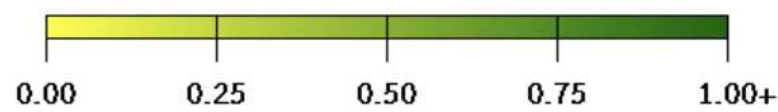
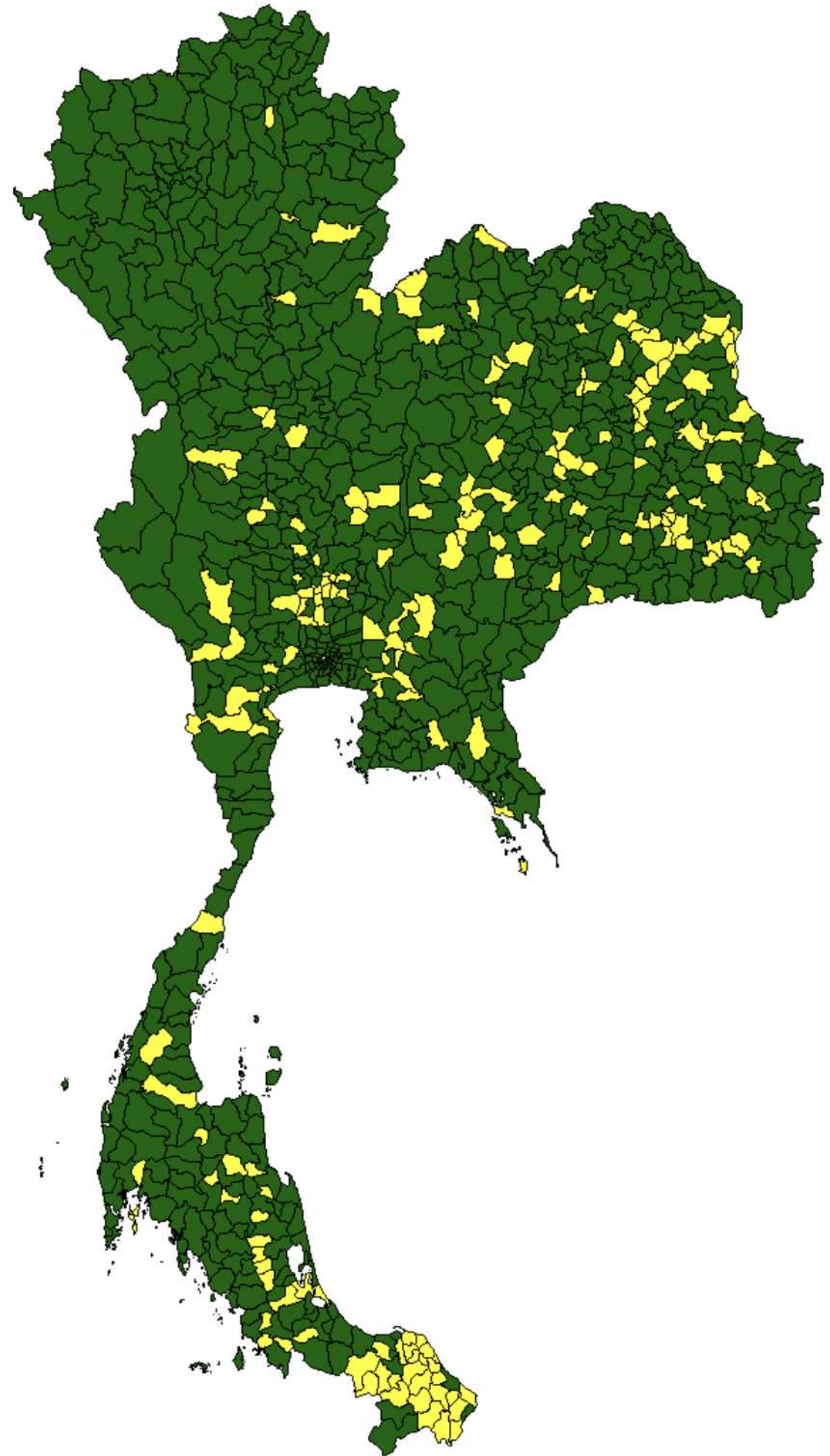
928 AMPHURS (DISTRICTS)

733 AMPHURS HAVE A CHURCH

192 AMPHURS HAVE NO CHURCH

21% OF ALL THE AMPHURS  
IN THAILAND HAVE NO  
CHURCH





**185 AMPHURS HAVE ONLY 1 CHURCH**

**327 AMPHURS HAVE 2 TO 5 CHURCHES**

**161 AMPHURS HAVE 6-20 CHURCHES**

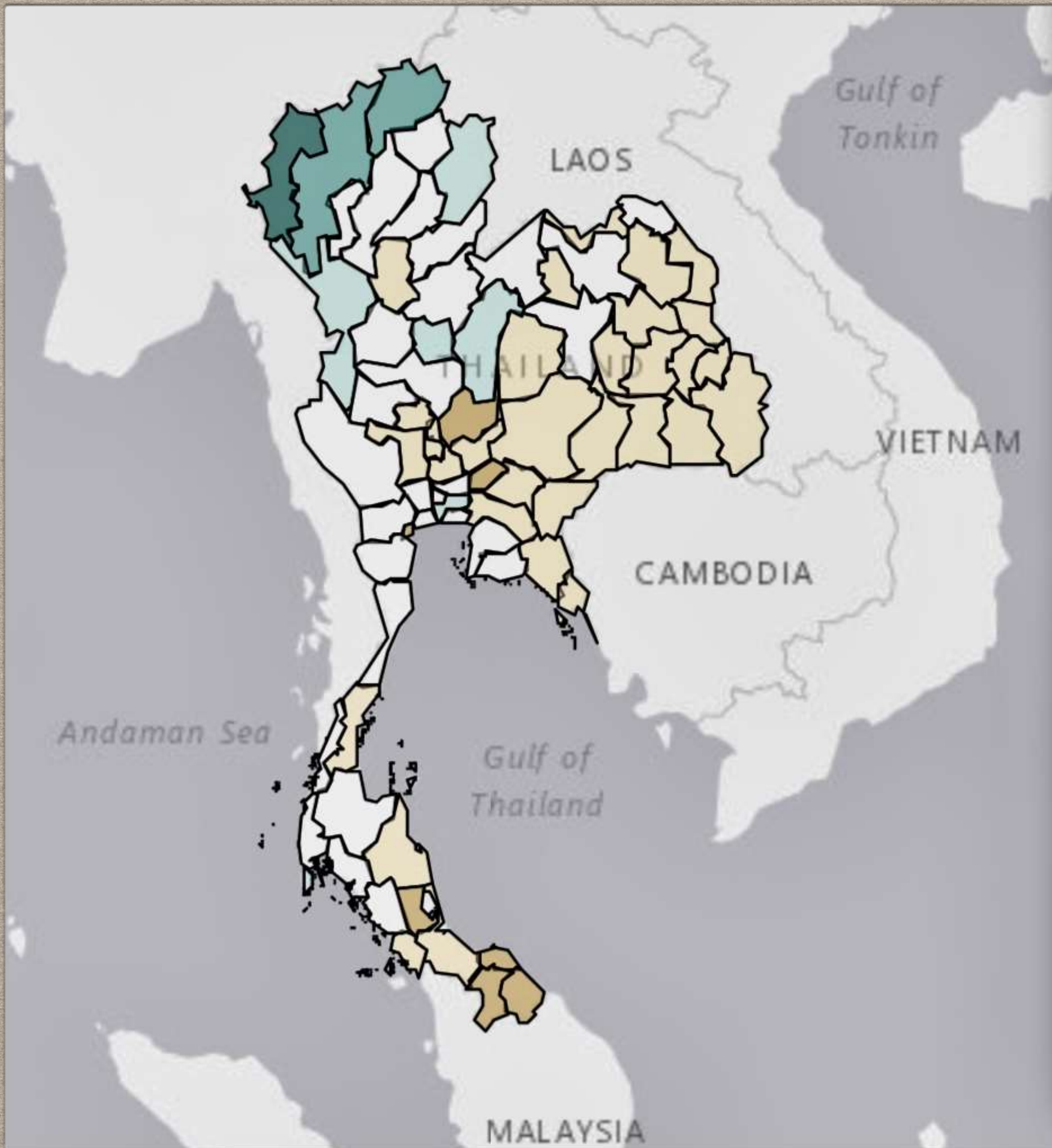
**58 AMPHURS HAVE MORE THAN 20 CHURCHES**

**AMPHUR MUANG CHIANG RAI HAS THE MOST NUMBER OF CHURCHES WITH 199**

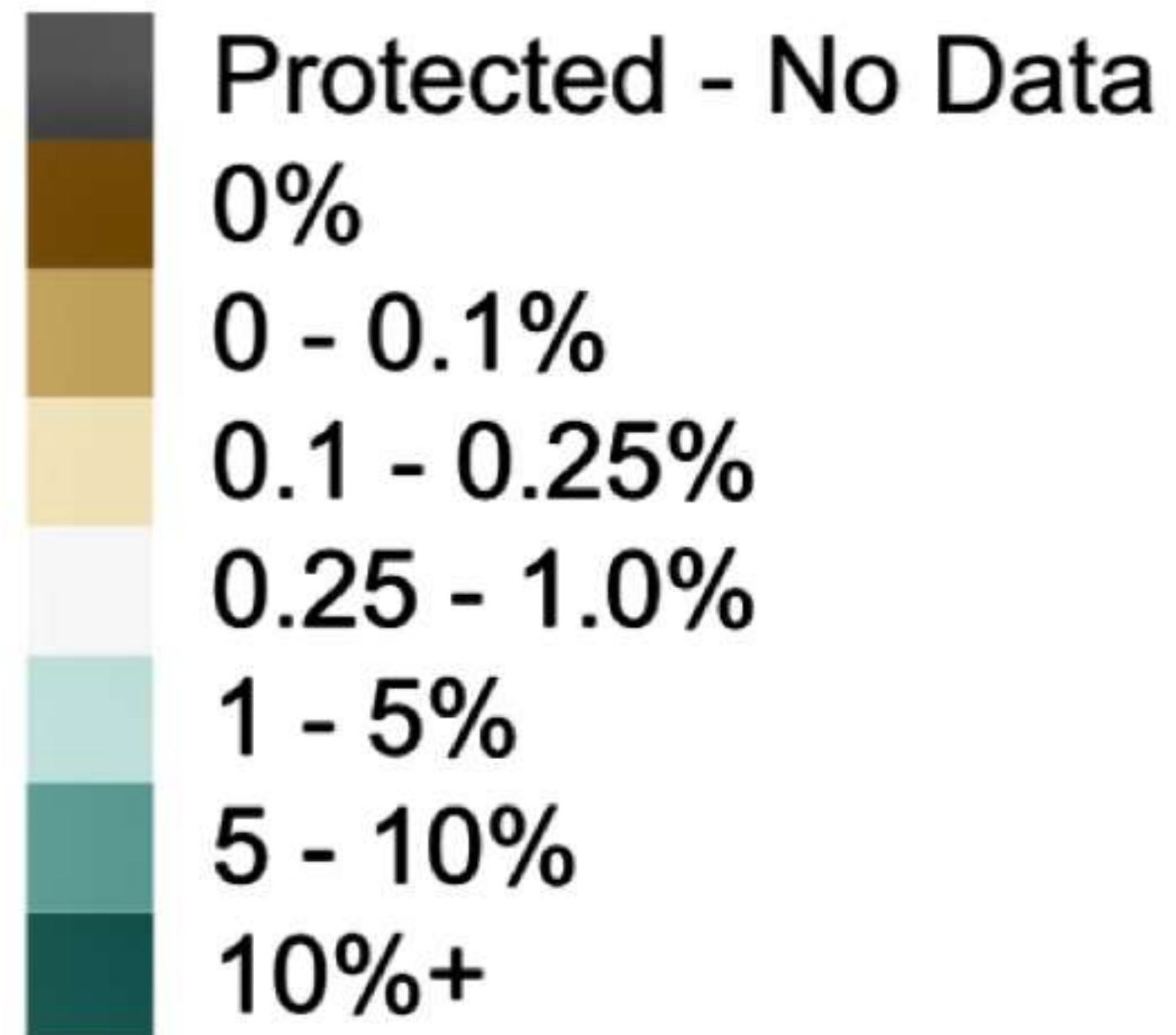
DATA SAMPLE ON MAY 11, 2020

[HTTP://WWW.E-STAR.WS/STATIC-MAPS.HTML](http://www.e-star.ws/static-maps.html)





## Percentage of Christians





IN THE **192** YEARS SINCE THE GOSPEL CAME TO THAILAND **6%** OF THE VILLAGES HAVE BEEN REACHED WITH THE GOSPEL.

**ONE PERSON** DIES **EVERY MINUTE** IN THAILAND WITHOUT EVER HEARING ABOUT JESUS.



# OUR MISSION

OUR MISSION IS THE  
URGENT  
EVANGELIZATION OF  
THAILAND







**MATT 28:18-20 THE GREAT COMMISSION**

**WHAT IS THE PRIMARY COMMAND?**



**TO THE WORK:  
MAKE  
DISCIPLES!**







**POLL 1: CHALLENGES TO SEEING THE GOSPEL  
SPREAD IN UNREACHED AREAS AND VILLAGES  
W/LITTLE TO NO RELATIONSHIPS?**



# **THE CHEAT SHEET: BIBLICAL DIRECTION FOR THE TASK**

- **Matt 28:18-20 Go, not invite.**
- **Jn 17:15-18 Go into.**
- **Phil 2:1-8 Jesus's Incarnation as an example and as the foundation of our service.**
- **Jn 13:1-20 Jesus's example of service as a model for "reaching into".**



# GO OUT

(FROM COMFORT ZONES, GROUP, HOME CHURCHES, ETC.)  
IN ORDER TO REACH IN( TO COMMUNITIES, FAMILIES, LIVES IN NEED).

**POLL2: MINISTRY IDEAS FOR GOING OUT AND REACHING IN.**



**BREAK OUT #1:**  
**MAKE A PLAN FOR ENTERING  
INTO AN UNREACHED VILLAGE**

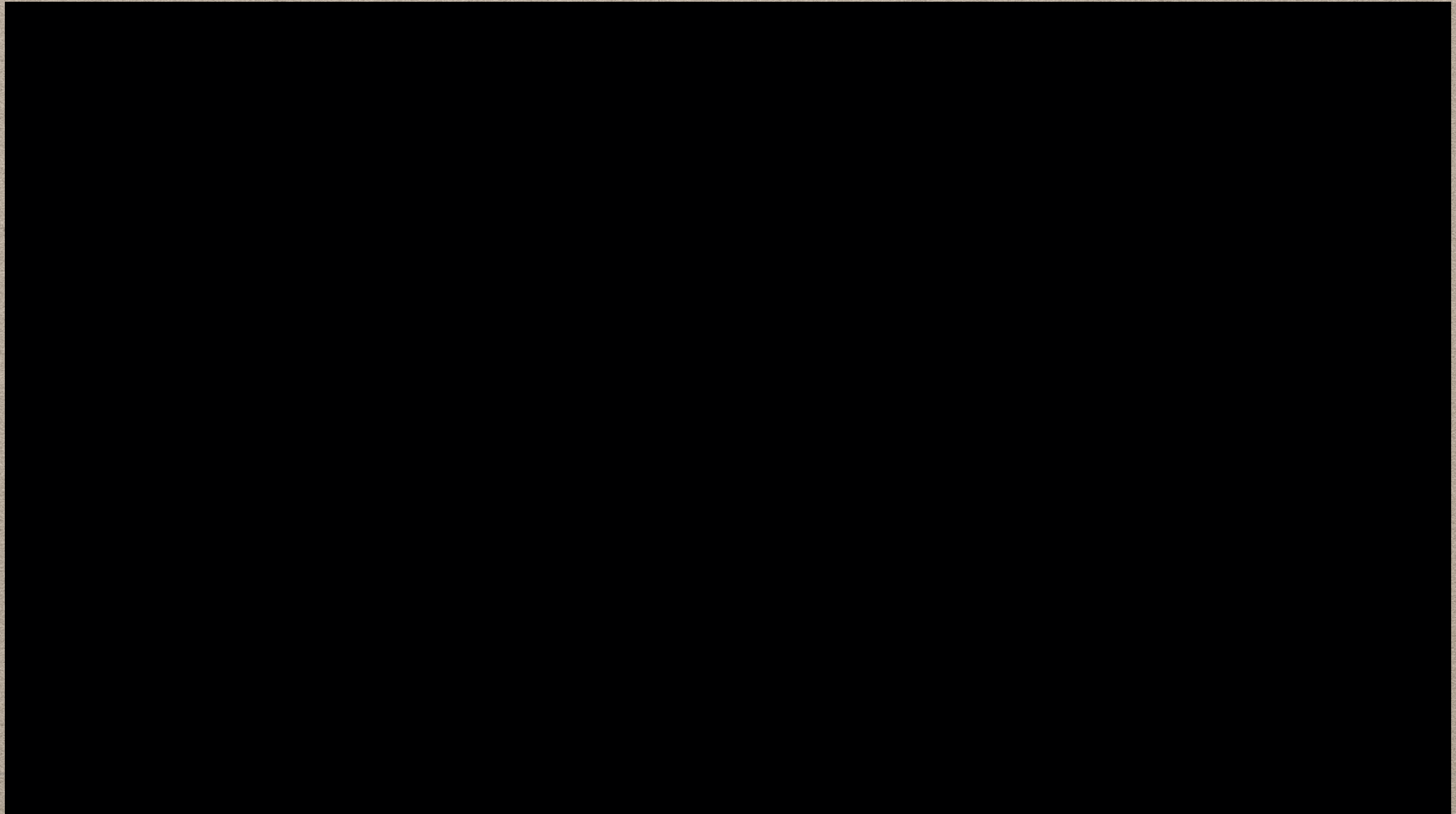


**NEW INTEL:  
FOOTBALL IS A THING IN THAILAND**





# WHAT DOES SATTHA THINK OF SPORTS MINISTRY?







**Sattha Thailand**

# SATTHA SIMPLE PLAN

## 1. SATTHA INTERNATIONAL









# SATTHA'S SIMPLE PLAN

## 2. COACHING





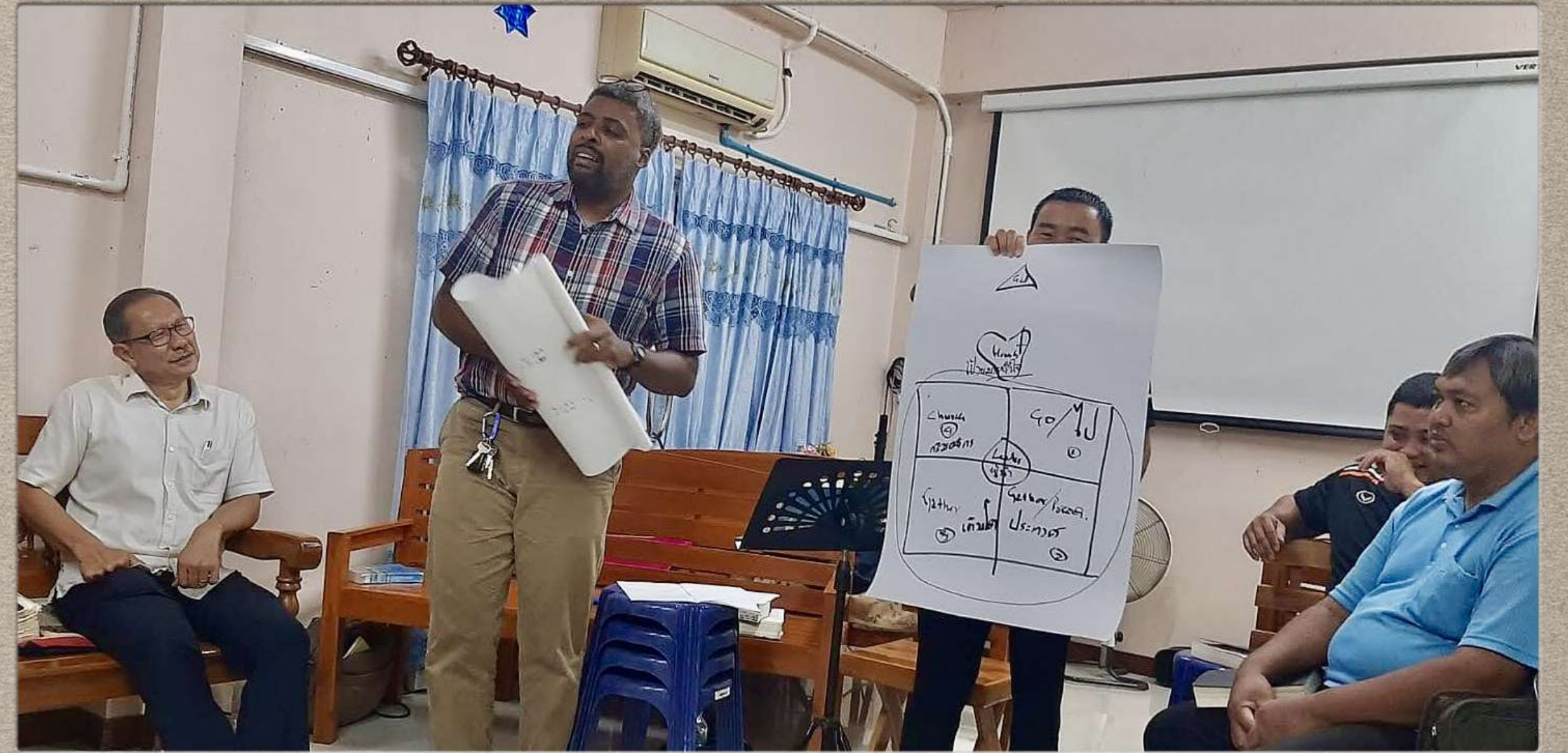




# SATTHA'S SIMPLE PLAN

## 3. TRAINING: DMM & 4 FIELDS









**BREAK OUT #2:**  
**MAKING DISCIPLES: WHAT IS YOUR SATTHA**  
**PLAN FOR ENTERING AND SUSTAINING MINISTRY IN YOUR**  
**COMMUNITY AND BEYOND**





# You are Invited

- 1. BE DISCIPLE MAKERS WHERE YOU ARE**
- 2. SATTHA INTERNATIONAL 2024**
- 3. SA OR LONGER TERM OPPORTUNITIES**
- 4. SUPPORT TEAM**