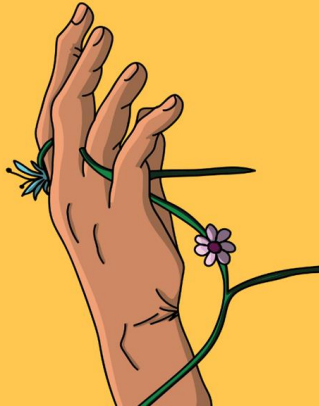


Incarnational Ministry: The Beauty of "Being With"



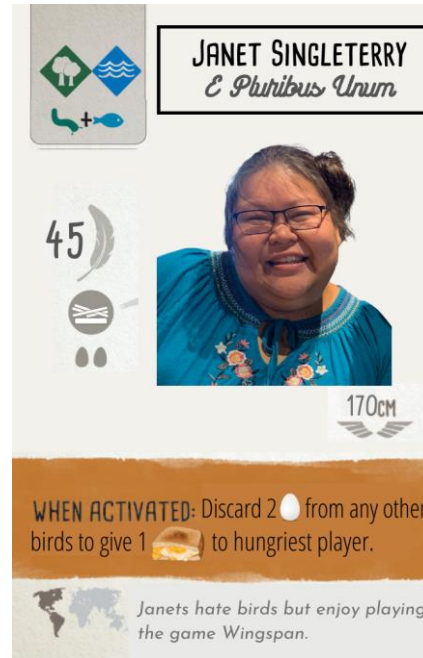
BE WITH



**Janet Singleterry
and
Nayeli
Barragán**



Who are we?




JANET SINGLETERRY
E Puribus Unum

45

170cm

WHEN ACTIVATED: Discard 2 🥚 from any other birds to give 1 🍞 to hungriest player.

 Janets hate birds but enjoy playing the game Wingspan.



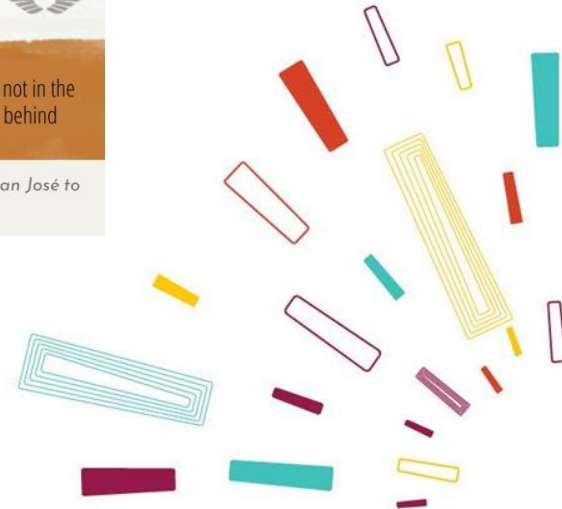
NAYELI BARRAGÁN
Celer Et Firmit

20

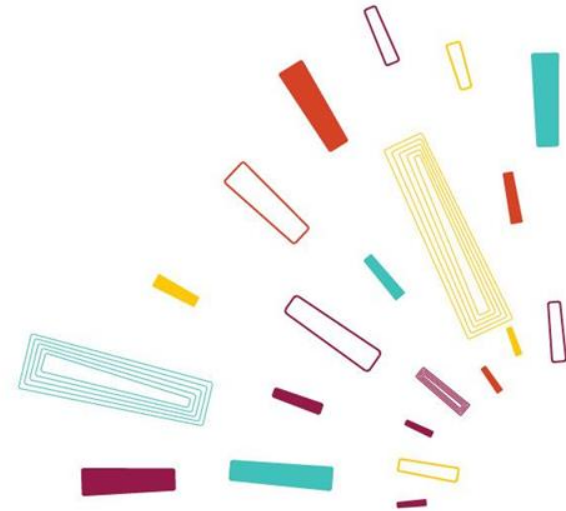
157cm

WHEN ACTIVATED: Roll all dice not in the birdfeeder. If none are 🐾, tuck a 🗺 behind this bird.

 Nayelis migrate from San José to Riverside quarterly.

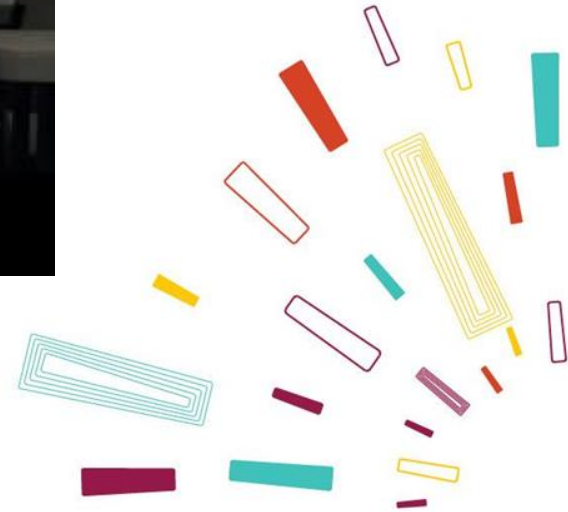


What is Servant Partners?



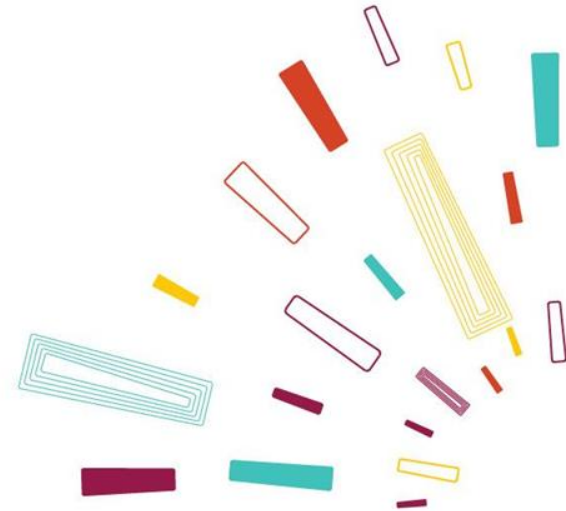


WHO IS
SERVANT PARTNERS



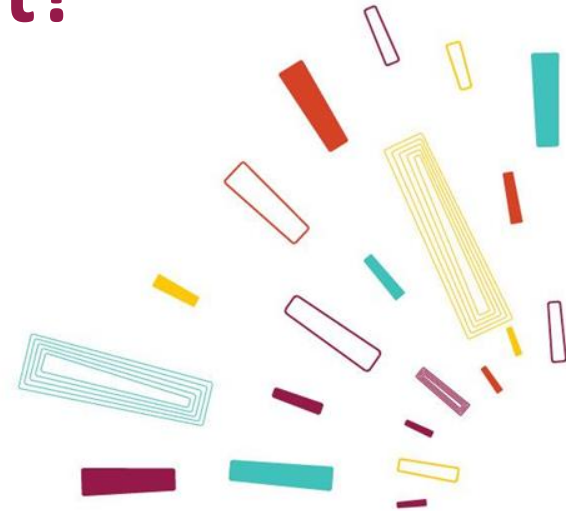
**Get in pairs with someone
you don't know.**

**Take 3 min to get to know them
the best you can!**



**Who thinks they found out the most
about their partner.**

What did you find out?



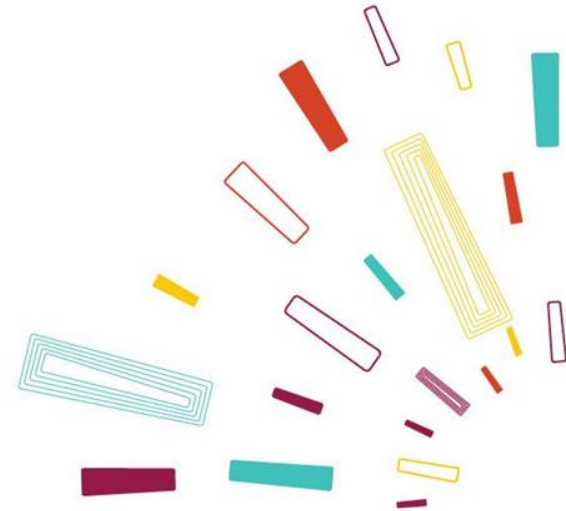


How many of you know what your partner's deepest need is right now?

How many of you know what your partner's most significant life achievement is?



What is Incarnational Ministry?






9 Signs of Transformation

- Jesus Communities
- Civic Good
- Lifelong Learning
- Wealth at the Bottom
- Breakthrough to Freedom

- Whole Families
- Health for All
- Systems that Work
- Beauty and Creativity

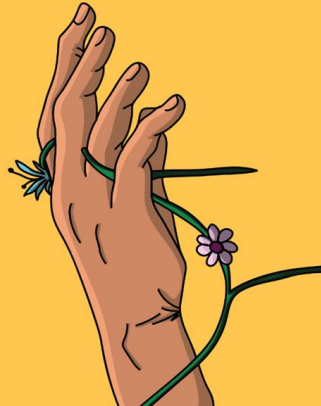




Incarnational Ministry: The Beauty of "Being With"



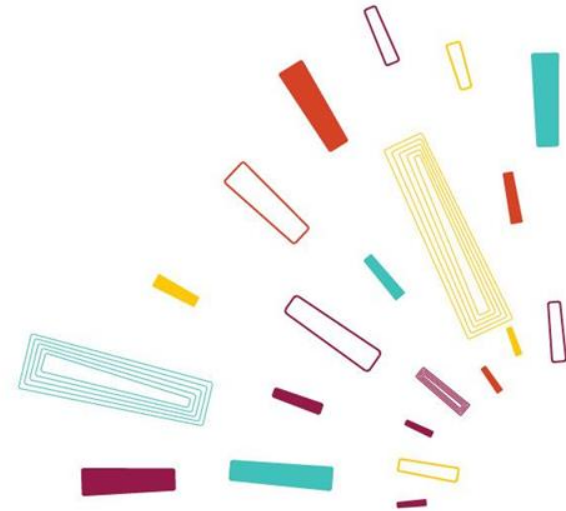
BE WITH



**Janet Singleterry
and
Nayeli
Barragán**

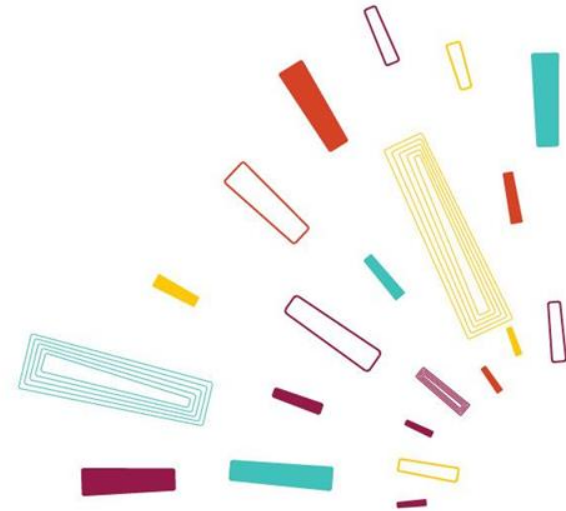


What has
“incarnational ministry”
meant to you?

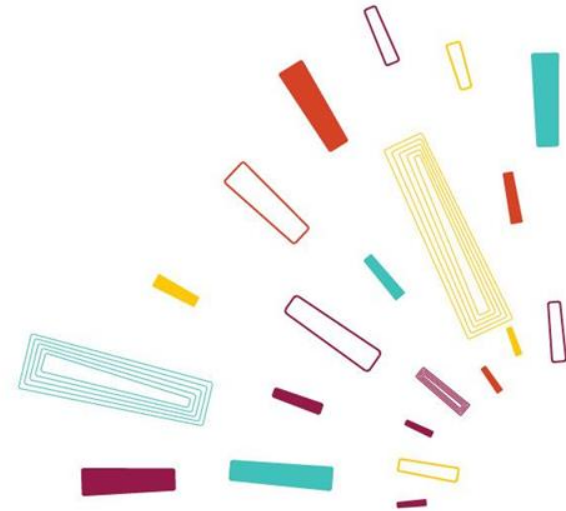


**What has it meant for Servant
Partners to be in your
neighborhood for the last 10
years?**

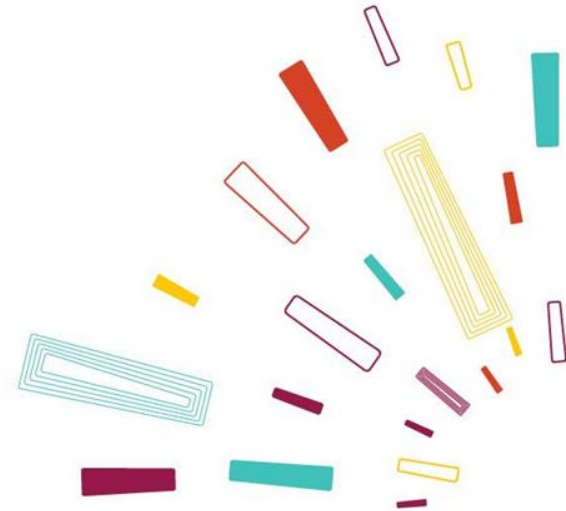
**What did it feel like
BEFORE you knew what
Servant Partners or SP Interns
were?**



**And then after you saw
“behind the curtain”?**



What have been good, the bad, and the ugly parts of Servant Partners being in the neighborhood?



**What would you share with
people who are moving in
cross-culturally to a new place
to serve for what they would
hope would be
long-term?**

Q & A

