

Risk, Faith and Safety

Missions in an Era of Ebola and Terrorism

Scott Myhre MD MPH
Jennifer Myhre MD MPH

Serge

Grace at the Fray









**MINISTRY OF HEALTH
BUNDIBUGYO HOSPITAL**

P O BOX 1148 BUNDIBUGYO

VISITING HOURS

DAILY

700 AM TO 800 AM

100 PM TO 200 PM

500 PM TO 700 PM





Questions

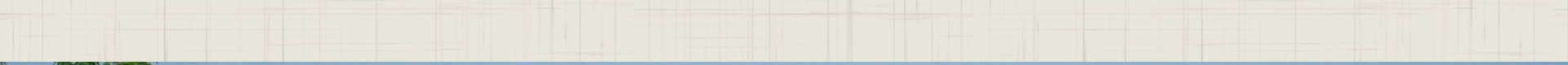
Break into small groups for 3 minutes...

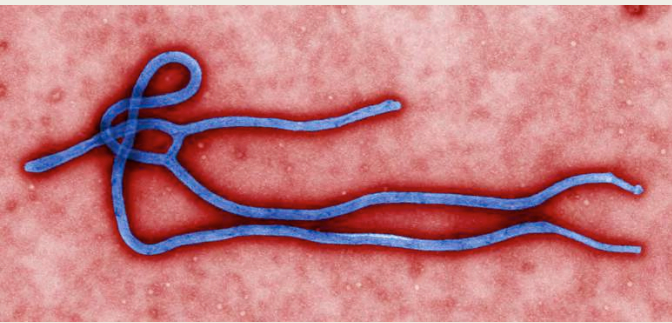
What would you do?

Why?

Based on what values?

Does your answer change if you
have children?





Risk and Safety

Perception and Reality

Cognitive bias:

- Amplify rare and spectacular risks
- Amplify risks from unknown and foreign sources
- Feeling of vulnerability results in fear



Perceived Risks: Ebola, Terrorism and the Car

- US/Can citizen deaths in North America from Ebola = 0
- US/Can citizen deaths in North America from Islamic fundamental attacks (since 9/11/01 event) = 48
- US/Canadian deaths from car accidents (2013) = 34,796





Incarnation

Compelled by the Needs of the World

If we want to reach the Majority World, we must be willing to encounter their reality.

Faith does not make us immune to pain, suffering, and loss.

Don't confuse faith with entitlement.

Cross

Compelled by the example of Jesus

The way is suffering and loss

- What is our goal?
- Life, liberty, and the pursuit of happiness?
- Have safety and comfort become a North American idol?

Whoever desires to save his life shall lose it, but
whoever loses his life for my sake shall find it

– Mt 16:25





Redemption

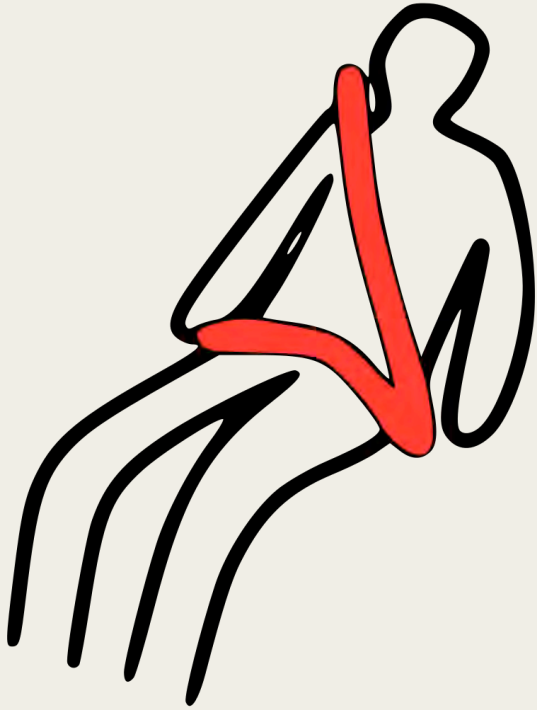
Compelled by a view of the Kingdom

A Balance...

The gain of serving a needy world
against
the risks of living a sacrificial life

*...I have suffered the loss of all things and
count them as rubbish that I may gain Christ
(Phil 3:8)*





Wisdom

Wise as serpents, innocent as doves

- Take reasonable precautions, particularly with attention to children on teams
- Don't take risks for the sake of the thrill
- No Lone Ranger decision-making
- Leave room for people to follow their conscience and do things that might end badly



Faith

In the end only God knows what is “risky and what is “safe”.

Only God knows True Reality.

Beware of putting God in a box, thinking we know what is best. The same God who sent Joseph into prison, Moses into the Red Sea, Esther into the King’s presence...may have a rescue planned that we don’t know. We see through a glass darkly. This is what it means to walk by faith, and that walk may not always turn out the way we think it should (e.g., Hebrews 11).

The Resurrection says that loss is not the final word.

It is real but will be swallowed in gain.

Serge

Grace at the Fray

smyhre@serge.org

jmyhre@serge.org

<http://paradoxuganda.blogspot.com>



@graceatthefray



facebook.com/sergeglobal



@graceatthefray